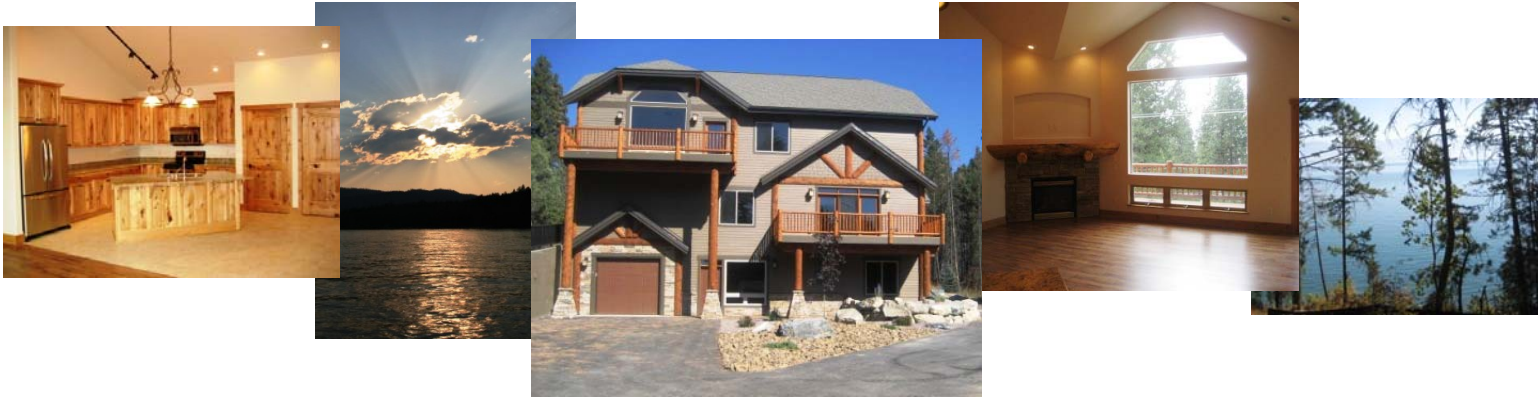


SIMPLY THE BEST RENTAL UNITS AT FLATHEAD LAKE

The Villas At Juniper Bay LOCATED IN SOMERS



Simply the most elegant, beautifully appointed apartments in all of Flathead County. Be the first to live in these unique brand new gorgeous units with these outstanding features:

- 3 bedroom 2 bath, and 2 bedroom 2 bath units, from 1265-1559 sq. ft
- Some Senior friendly living – single level units – most units accessible without stairs
- Beautiful granite countertops in kitchens
- Stainless Steel Refrigerators, microwave, dishwashers
- Kitchens appointed with gorgeous custom Hickory hardwood cabinetries
- Washers and Dryers conveniently located inside each unit
- Walk in closets
- Attached garages
- Beautiful stone adorns the Gas fireplaces with natural log mantels
- Impressive views from almost every room
- Surrounded by nature's serenity, ponderosa pines and natural landscaping
- Craftsman styling with handsome stone, log and shingle style siding
- No Pets/Non Smoking environment
- Easy access year round
- Minutes from downtown Kalispell
- 12 miles west of Bigfork, enjoy live theater, shopping and dining
- Within 5 minutes of shopping, including numerous fine dining and family restaurants

Units From \$995 - \$1195

From Kalispell take Highway 93 South to North Juniper Bay Road – .3 miles past The Grill at MacKinaw's, turn left – 396 North Juniper Bay Road – Look for our signs

From Lakeside take Highway 93 North to north Juniper Bay Road – turn right - ½ mile – 396 North Juniper Bay Road

Contact Patty Smith at 406-755-3520

THE VILLAS AT JUNIPER BAY

Feature List

EXTERIOR FEATURES

- Fully landscaped, maintenance-free common areas
- Montana Log Architectural Detailing
- Stone finish accents
- Common area lighting
- Attached garage fully finished with garage door opener
- Large viewing decks facing the lake

ENERGY SAVING FEATURES

- R-19 insulation in exterior walls
- R-38 insulation in roof
- Double-glazed insulated windows
- Weather insulated exterior doors
- Foundation and foundation floor insulation

HEATING & AIR-CONDITIONING

- Hi-Efficiency gas forced air heat
- 1-Zone air-conditioning system

INTERNET/ELECTRICAL FEATURES

- CAT 5 wiring
- High speed internet/phone/cable/video

RECREATIONAL AMENITIES

- Short drive to Somers landing for walking, sailing, fishing, lake kayaking, wind-surfing, boating, water skiing, and swimming
- Picnic area
- Barbecues

BATHROOM FEATURES

- Large luxury tiled shower
- Oversized mirror in master bath
- 12"x12" floor tile
- 4 piece master bath
- Double sinks in master bath

MASTER BEDROOM FEATURES

- Walk-in closet

KITCHEN FEATURES

- Stainless steel Profile self-cleaning oven and range
- Stainless steel Profile Spacemaker microwave
- Stainless steel Profile side-by-side refrigerator
- Granite tile countertops
- 12"x12" floor tile

INTERIOR FEATURES

- Spacious and functional design
- Exceptional natural light
- Large oversized windows
- Voluminous 9' ceilings
- Gas fireplace with stone surround and log mantle
- Quality cabinetry with Alder finish
- Decorator paint
- Alder doors with natural Alder trim
- 5 ½ - 6 inch Alder base molding
- Oil rubbed bronze interior/exterior door hardware
- Alder wood window sills
- Wall-to-wall carpeting with ½" pad
- Slate/tile entry
- Millwork niches
- Oil rubbed bronze light fixture package
- Porcelain sinks
- Large walk-in closets
- Entry and linen closets
- Substantial storage
- Laundry area with full-size stackable washer and dryer
- Sound deadening matt and gyp-crete between floors for acoustical privacy